

საქართველოს სსრ კულტურის სამინისტრო
ხალხური შემოქმედების რესპუბლიკური სახლი

რ. ლალიძე

საკონსერვო ვაღსი

ორი სოლისიძისა და შერეული

გუნდისათვის

ფ. ა. თანაღვით

თბილისი

1969

საკონსერტო ვალსი

ბეჭ. ს. ფაშალიშვილისა

მუს. რ. ლალიძისა

ვალსის ტემპით

Musical notation for the first system of the waltz, consisting of two staves (treble and bass clef) with chords and a few notes.

Musical notation for the second system of the waltz, consisting of two staves (treble and bass clef) with chords and a few notes.

Musical notation for the first system of the piano accompaniment, consisting of two staves (treble and bass clef) with chords and a few notes.

Musical notation for the second system of the piano accompaniment, consisting of two staves (treble and bass clef) with chords and a few notes.

M 10866

FM 266

Musical notation for the third system of the piano accompaniment, consisting of two staves (treble and bass clef) with chords and a few notes.

Handwritten musical notation on the left page, first system. It consists of three staves. The top staff is a single treble clef staff with a whole rest. The middle and bottom staves are grouped by a brace and contain a piano accompaniment. The middle staff has a treble clef and contains a whole note chord, followed by a half note chord, and then a quarter note chord. The bottom staff has a bass clef and contains a whole note chord, followed by a half note chord, and then a quarter note chord.

Handwritten musical notation on the left page, second system. It consists of three staves. The top staff is a single treble clef staff with a whole rest. The middle and bottom staves are grouped by a brace and contain a piano accompaniment. The middle staff has a treble clef and contains a whole note chord, followed by a half note chord, and then a quarter note chord. The bottom staff has a bass clef and contains a whole note chord, followed by a half note chord, and then a quarter note chord.

Handwritten musical notation on the left page, third system. It consists of three staves. The top staff is a single treble clef staff with a whole rest. The middle and bottom staves are grouped by a brace and contain a piano accompaniment. The middle staff has a treble clef and contains a whole note chord, followed by a half note chord, and then a quarter note chord. The bottom staff has a bass clef and contains a whole note chord, followed by a half note chord, and then a quarter note chord.

Handwritten musical notation on the right page, first system. It consists of three staves. The top staff is a single treble clef staff with a whole rest. The middle and bottom staves are grouped by a brace and contain a piano accompaniment. The middle staff has a treble clef and contains a whole note chord, followed by a half note chord, and then a quarter note chord. The bottom staff has a bass clef and contains a whole note chord, followed by a half note chord, and then a quarter note chord.

Handwritten musical notation on the right page, second system. It consists of three staves. The top staff is a single treble clef staff with a whole rest. The middle and bottom staves are grouped by a brace and contain a piano accompaniment. The middle staff has a treble clef and contains a whole note chord, followed by a half note chord, and then a quarter note chord. The bottom staff has a bass clef and contains a whole note chord, followed by a half note chord, and then a quarter note chord.

Handwritten musical notation on the right page, third system. It consists of three staves. The top staff is a single treble clef staff with a whole rest. The middle and bottom staves are grouped by a brace and contain a piano accompaniment. The middle staff has a treble clef and contains a whole note chord, followed by a half note chord, and then a quarter note chord. The bottom staff has a bass clef and contains a whole note chord, followed by a half note chord, and then a quarter note chord.

სოლო

1. მე ი- ვარ
2. მეც მა- ნა- რებს

ნაღ- ჩა- ბა- ლის
მზის სხი- ვი- მის

მკო- ბე-
ვი- ა-

ლი,
ლი,

გა- ზა- ფხუ- ლის
ვე- ვე- ლე- მის

ნა- ზი- მა- ნა-
ლა მერც- ლე- მის

Handwritten musical notation for the first system on page 8. It consists of a vocal line on a single staff and a piano accompaniment on two staves (treble and bass clef). The vocal line has two measures with lyrics: "հո- նո- ծո- յո-".

Handwritten musical notation for the second system on page 8. It consists of a vocal line on a single staff and a piano accompaniment on two staves. The vocal line has two measures with lyrics: "ԱՅ՛" and "ԱՅ՛".

Handwritten musical notation for the third system on page 8. It consists of a vocal line on a single staff and a piano accompaniment on two staves. The vocal line has four measures with lyrics: "Մյս- հոմ ծո- հոմ, րոս նո. ու հոմ".

Handwritten musical notation for the first system on page 9. It consists of a vocal line on a single staff and a piano accompaniment on two staves. The vocal line has four measures with lyrics: "ծո- ծո- ծո- հոմ ըս- մո- ծո- հոմ հոմ".

Handwritten musical notation for the second system on page 9. It consists of a vocal line on a single staff and a piano accompaniment on two staves. The vocal line has two measures with lyrics: "մո- նո- ծո- ծո-".

Handwritten musical notation for the third system on page 9. It consists of a vocal line on a single staff and a piano accompaniment on two staves. The vocal line has two measures with lyrics: "հոմ, հոմ, ըս, հոմ".

მე
სულ

ი-
ვში-
ა-

ვარ,
ლებ,

მურ-
სულ

ჰი
ვბი-

კა-
ბი-

ბით
ნებ

მორ-
რბე-

თუ-
ვი-

ლი,
თა.

გუნდი

1. წე-როს

2. ღა სი-

Ped

30- რახ, ბუჩ- ქობ ძი-რახ
 რ რამდ რა- მი- ბე- რახს

8

მი- სუ- ლო,
 ბე- ვი- რახ,
 #

Handwritten musical score for page 14. It consists of three staves. The top staff is a vocal line with lyrics in Georgian. The middle and bottom staves are piano accompaniment. The lyrics are:
 - მე - ა ვარ, ლურ - ვი
 ხულ ვარი - ა - ლებ, ხულ ვბი

Handwritten musical score for page 15. It consists of three staves. The top staff is a vocal line with lyrics in Georgian. The middle and bottom staves are piano accompaniment. The lyrics are:
 კა - ბით, მორ - თუ - ლი,
 ბი - ნებ რხე - ვი

Handwritten musical score on page 16, featuring three systems of staves. The first system includes a treble clef staff with a first ending bracket labeled '1' and a second ending bracket labeled '2'. The second system consists of three staves (treble, alto, and bass clefs) with various musical notations including notes, rests, and slurs. The third system consists of two staves (treble and bass clefs) with rhythmic patterns and notes. The page number '16' is located at the bottom center.

FM 266
2

Handwritten musical score on page 17, featuring three systems of staves. The first system includes a treble clef staff with a first ending bracket labeled '2'. The second system consists of three staves (treble, alto, and bass clefs) with musical notation and lyrics in Georgian: 'მე გა- ზა-ფხულობ ნორ- ჩი'. The third system consists of two staves (treble and bass clefs) with musical notation, including a 'gliss' marking. The page number '17' is located at the bottom center.

Handwritten musical score for page 18. It consists of three staves. The top two staves are vocal lines in treble clef. The bottom staff is a piano accompaniment in bass clef. The lyrics are written below the vocal lines.

გუ-ლიო ვა- ტა- რებ,

Handwritten musical score for page 19. It consists of three staves. The top two staves are vocal lines in treble clef. The bottom staff is a piano accompaniment in bass clef. The lyrics are written below the vocal lines.

რომ ეს გუ-ლი გაღ- ვი-

Handwritten musical score for page 20. The score consists of three systems. The first system has two staves: a vocal line (treble clef) and a piano accompaniment line (bass clef). The second system has three staves: a vocal line (treble clef), a piano accompaniment line (treble clef), and a piano accompaniment line (bass clef). The third system has two staves: a vocal line (treble clef) and a piano accompaniment line (bass clef). The lyrics are written in Georgian script below the vocal lines.

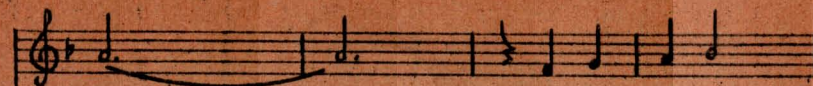
შა-ლოთ პა- ტა- რეძს;

Handwritten musical score for page 21. The score consists of three systems. The first system has two staves: a vocal line (treble clef) and a piano accompaniment line (bass clef). The second system has three staves: a vocal line (treble clef), a piano accompaniment line (treble clef), and a piano accompaniment line (bass clef). The third system has two staves: a vocal line (treble clef) and a piano accompaniment line (bass clef). The lyrics are written in Georgian script below the vocal lines.

მე ი- ა ვარ ბაღ- რა-



ბა. ღობ შკო. ზე-



ლი, გა-ზა- ცხუ-ლის



Handwritten musical score on page 24. The page contains three systems of staves. The first system includes a vocal line with lyrics: *ბა- ბო ბა- ბა- რა- ბო-* and a piano accompaniment. The second system consists of empty staves. The third system shows a piano accompaniment with chords and arpeggios.

Handwritten musical score on page 25. The page contains three systems of staves. The first system includes a vocal line with lyrics: *მე.* and a piano accompaniment. The second system has a vocal line with lyrics: *4. ბოზ ბა- ბა-რაბბ* and a piano accompaniment. The third system shows a piano accompaniment with chords and arpeggios.

Handwritten musical score for page 26. The top system consists of a vocal line in a treble clef with a key signature of one flat and a 4/4 time signature. Below it are two piano accompaniment staves, one in a treble clef and one in a bass clef. The vocal line contains five measures of music with lyrics written below: "მზეს", "სსი-", "პი-ბის", "ვი-", and "ა-".

Piano accompaniment for page 26, consisting of two staves (treble and bass clefs) with handwritten musical notation. The accompaniment features a steady rhythmic pattern in the bass line and chords in the treble line.

Handwritten musical score for page 27. The top system consists of a vocal line in a treble clef with a key signature of one flat and a 4/4 time signature. Below it are two piano accompaniment staves, one in a treble clef and one in a bass clef. The vocal line contains three measures of music with lyrics written below: "ლო,", "პე- პე-", and "ლო-ბის".

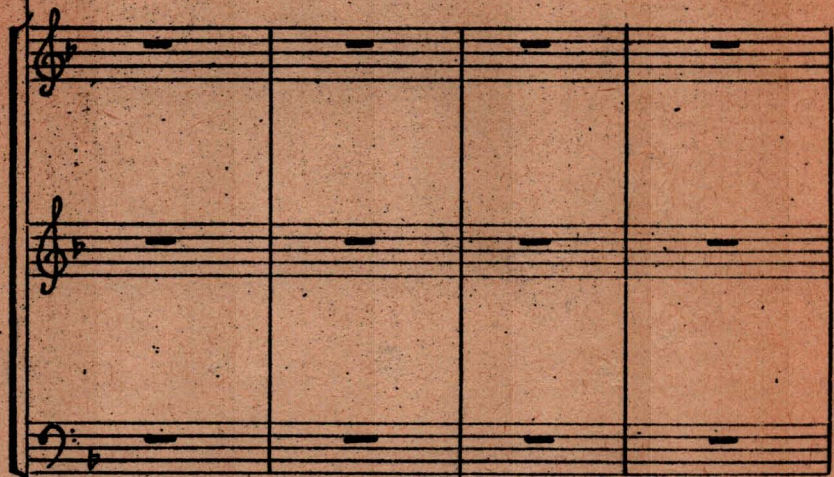
Piano accompaniment for page 27, consisting of two staves (treble and bass clefs) with handwritten musical notation. The accompaniment features a steady rhythmic pattern in the bass line and chords in the treble line. A fermata is placed over the first measure of the treble staff.

Handwritten musical score for page 28. The top system consists of four staves: a vocal line (treble clef) with lyrics, a piano accompaniment (treble clef), a vocal line (treble clef), and a piano accompaniment (bass clef). The lyrics are: **მე- მერც- ხლე- დის სრი-**. The bottom system consists of two staves for piano accompaniment (treble and bass clefs).

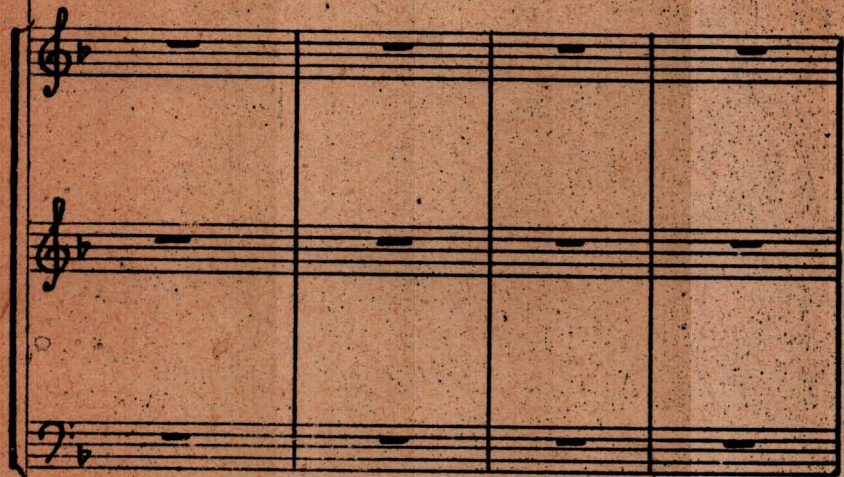
Handwritten musical score for page 29. The top system consists of four staves: a vocal line (treble clef) with lyrics, a piano accompaniment (treble clef), a vocal line (treble clef), and a piano accompaniment (bass clef). The lyrics are: **მე- ვარ**. The bottom system consists of two staves for piano accompaniment (treble and bass clefs).



ლურ ჰი კა-ბით შორ თუ-



ლი, - წა- მა- ყვა-ნეთ,



თქვენ- თვი- სს ვარ მრ- სუ-
 — — — —
 — — — —
 — — — —

მოს
 — — — —
 — — — —
 — — — —
 — — — —
 — — — —
 — — — —

Handwritten musical score for page 34. It consists of four staves. The top staff is a vocal line with a treble clef and a key signature of one flat. The second staff is a vocal line with a treble clef and lyrics in Georgian: ლურ- გი კა-ბით მორ- თუ-. The third staff is a vocal line with a treble clef. The bottom staff is a piano accompaniment with a bass clef. The music is in a simple, folk-like style.

Handwritten musical score for page 35. It consists of four staves. The top staff is a vocal line with a treble clef and a key signature of one flat. The second staff is a vocal line with a treble clef and lyrics in Georgian: - წა-ში- ყვა-ნეთ. The third staff is a vocal line with a treble clef. The bottom staff is a piano accompaniment with a bass clef. The music continues from the previous page.

თქვენ- თვი- ხა ვარ მთ-
 თქვენ- თვი- ხა ვარ მთ-

სუ- მო!
 სუ- მო!

6m

n 40/696

Handwritten musical notation on page 38, measures 1-3. It consists of four staves. The top three staves are in treble clef with a key signature of one flat (Bb). The bottom staff is in bass clef. The music features a melodic line with slurs and a bass line with chords.

Handwritten musical notation on page 38, measures 4-6. It consists of two staves. The top staff is in treble clef with a key signature of one flat (Bb). The bottom staff is in bass clef. A dashed line with the number '8' above it spans across the measures, indicating an octave shift.

Handwritten musical notation on page 39, measures 1-3. It consists of four staves. The top three staves are in treble clef with a key signature of one flat (Bb). The bottom staff is in bass clef. The music features a melodic line with slurs and a bass line with chords.

Handwritten musical notation on page 39, measures 4-6. It consists of two staves. The top staff is in treble clef with a key signature of one flat (Bb). The bottom staff is in bass clef. A dashed line with the number '8' above it spans across the measures, indicating an octave shift.

1. მე ია ვარ ბაღია-ბაღის მკობელი,
გაზაფხულის ნაზი მახარობელი;
წყაროს პირას, ბუჩქის ძირას მოსული,
მე ია ვარ, ლურჯი კაბით მორთული.
2. მეც მახარებს მზის სხივების ციალი,
პეპეღების და მერცხლების სრიალი
და სიო რომ დამიბერავს ხევიდან, —
სულ ვშრიალღებ, სულ ვბიბინებ რხევითა.
3. მე გაზაფხულს ნორჩი გულით ვატარებ,
რომ ეს გული გადგიშალოთ პატარებს;
მე ია ვარ ბაღია-ბაღის მკობელი,
გაზაფხულის ნაზი მახარობელი.
4. მეც მახარებს მზის სხივების ციალი,
პეპეღების და მერცხლების სრიალი;
მე ია ვარ ლურჯი კაბით მორთული, —
წამიყვანეთ, თქვენთვისა ვარ მოსული!

P. ЛАГИДЗЕ

Концертный вальс

(На грузинском языке)

Тбилиси, 1969 г.