

დაიწყო აქთომქელმევილი



*გარეგან*

ТЕТРАДЬ  
მა  
НОТ

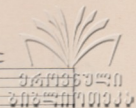


Allegro

XIII

ფიგურა

20/14



Handwritten musical notation for the first system. The top staff is in treble clef with a key signature of one sharp (F#) and a 3/4 time signature. The bottom staff is in bass clef. The music features a melodic line in the treble and a more rhythmic line in the bass. The bass line includes fingerings (4, 3, 2, 1, 4, 2, 3, 5, 1, 3) and a dynamic marking of *m. f*.

Handwritten musical notation for the second system. Similar to the first system, it shows a continuation of the melodic and rhythmic themes. The bass line includes fingerings (4, 3, 2, 3, 1, 3, 4, 3, 2, 3, 5, 3) and a dynamic marking of *m. f*.

Handwritten musical notation for the third system. The treble staff shows a melodic phrase with a sharp sign. The bass line includes fingerings (3, 3, m. s., 3, 3, 3, 3, 5, 3) and a dynamic marking of *m. s.*.

Handwritten musical notation for the fourth system. The bass line includes fingerings (2, 3, 1, 3, 1, 3, 2, 3, 1, 3, 1, 3).

Handwritten musical notation for the fifth system. The bass line includes fingerings (1, 3, 1, 3, 1, 3, 3, 2, 1, 2, 1, 2).

Handwritten musical notation for the sixth system. The bass line includes fingerings (3, 3, 2, 1, 2, 1, 3, 3, 3, 2, 1, 2, 2).



Handwritten musical notation, first system. Treble clef, bass clef. Includes notes, rests, and fingerings (3, 2, 1, 2, 3, 1, 4, 3).

Handwritten musical notation, second system. Treble clef, bass clef. Includes notes, rests, and fingerings (3, 2, 1, 2, 3, 1, 4, 3).

Handwritten musical notation, third system. Treble clef, bass clef. Includes notes, rests, and fingerings (3, 1, 2, 3, 4, 3, 1, 1, 4).

Handwritten musical notation, fourth system. Treble clef, bass clef. Includes notes, rests, and fingerings (3, 1, 2, 3, 4, 3, 2, 1, 3, 2).

Handwritten musical notation, fifth system. Treble clef, bass clef. Includes notes, rests, and fingerings (4, 2, 3, 5, 1, 3, 2, 1, 2).

Handwritten musical notation, sixth system. Treble clef, bass clef. Includes notes, rests, and fingerings (4, 2, 3, 5, 1, 4, 2, 1).

397443 5940  
2007 11 10 09 33

Handwritten musical notation for the first system. The treble clef staff contains a half note F, followed by a quarter note G with a slur and a 4-finger fingering, and a quarter note A with a slur and a 3-finger fingering. The bass clef staff contains a quarter note G with a slur and a 3-finger fingering, followed by a quarter note F with a slur and a 3-finger fingering, and a half note G with a slur and a 3-finger fingering. The system concludes with a quarter note G with a slur and a 3-finger fingering, and a quarter note A with a slur and a 3-finger fingering.

Handwritten musical notation for the second system. The treble clef staff contains a quarter note G with a slur and a 3-finger fingering, followed by a quarter note F with a slur and a 3-finger fingering, and a quarter note E with a slur and a 3-finger fingering. The bass clef staff contains a half note G with a slur and a 3-finger fingering, followed by a half note F with a slur and a 3-finger fingering, and a half note E with a slur and a 3-finger fingering.

Handwritten musical notation for the third system. The treble clef staff contains a quarter note G with a slur and a 3-finger fingering, followed by a quarter note F with a slur and a 3-finger fingering, and a quarter note E with a slur and a 3-finger fingering. The bass clef staff contains a half note G with a slur and a 3-finger fingering, followed by a half note F with a slur and a 3-finger fingering, and a half note E with a slur and a 3-finger fingering. The system concludes with a quarter note G with a slur and a 3-finger fingering, and a quarter note A with a slur and a 3-finger fingering.

Handwritten musical notation for the fourth system. The treble clef staff contains a quarter note G with a slur and a 3-finger fingering, followed by a quarter note F with a slur and a 3-finger fingering, and a quarter note E with a slur and a 3-finger fingering. The bass clef staff contains a half note G with a slur and a 3-finger fingering, followed by a half note F with a slur and a 3-finger fingering, and a half note E with a slur and a 3-finger fingering.

Handwritten musical notation for the fifth system. The treble clef staff contains a quarter note G with a slur and a 3-finger fingering, followed by a quarter note F with a slur and a 3-finger fingering, and a quarter note E with a slur and a 3-finger fingering. The bass clef staff contains a half note G with a slur and a 3-finger fingering, followed by a half note F with a slur and a 3-finger fingering, and a half note E with a slur and a 3-finger fingering.

Handwritten musical notation for the sixth system. The treble clef staff contains a quarter note G with a slur and a 3-finger fingering, followed by a quarter note F with a slur and a 3-finger fingering, and a quarter note E with a slur and a 3-finger fingering. The bass clef staff contains a half note G with a slur and a 3-finger fingering, followed by a half note F with a slur and a 3-finger fingering, and a half note E with a slur and a 3-finger fingering.







Handwritten musical notation for the first system. The treble clef staff begins with a measure containing a triplet of eighth notes (F4, G4, A4) and a quarter note (B4). The bass clef staff contains a quarter note (F3), a half note (B2), and a quarter note (D3). A large number '5' is written above the first measure. A stamp in the upper right corner reads '1974年5月4日' and '2000年10月30日'.

Handwritten musical notation for the second system. The treble clef staff has a quarter note (B4), a quarter note (C5), and a quarter note (D5). The bass clef staff has a quarter note (F3), a quarter note (G3), and a quarter note (A3). A large number '4' is written above the first measure.

Handwritten musical notation for the third system. The treble clef staff has a quarter note (B4), a quarter note (C5), and a quarter note (D5). The bass clef staff has a quarter note (F3), a quarter note (G3), and a quarter note (A3). A large number '3' is written above the first measure.

Handwritten musical notation for the fourth system. The treble clef staff has a quarter note (B4), a quarter note (C5), and a quarter note (D5). The bass clef staff has a quarter note (F3), a quarter note (G3), and a quarter note (A3). A large number '3' is written above the first measure.

Handwritten musical notation for the fifth system. The treble clef staff has a quarter note (B4), a quarter note (C5), and a quarter note (D5). The bass clef staff has a quarter note (F3), a quarter note (G3), and a quarter note (A3). A large number '3' is written above the first measure.

Handwritten musical notation for the sixth system. The treble clef staff has a quarter note (B4), a quarter note (C5), and a quarter note (D5). The bass clef staff has a quarter note (F3), a quarter note (G3), and a quarter note (A3). A large number '3' is written above the first measure.



6/11

Handwritten title or reference:  $\frac{1}{2}$  180001 XI



Vivo

Handwritten musical score for piano, consisting of six systems of two staves each (treble and bass clef). The music is in 6/8 time and B-flat major. The score includes various musical notations such as dynamics (mf), articulation (accents), and fingering (1-5).

System 1: Treble clef has a melodic line with eighth notes and quarter notes. Bass clef has a simple accompaniment. Dynamics: *mf*.

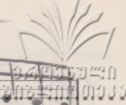
System 2: Treble clef continues the melodic line with some slurs and accents. Bass clef accompaniment remains simple.

System 3: Treble clef features more complex rhythmic patterns with slurs. Bass clef accompaniment includes some chords.

System 4: Treble clef has a more active melodic line with many slurs and accents. Bass clef accompaniment is more rhythmic.

System 5: Treble clef has a very active melodic line with many slurs and accents. Bass clef accompaniment is rhythmic.

System 6: Treble clef has a melodic line with some triplets and slurs. Bass clef accompaniment is rhythmic.



Handwritten musical score for guitar, consisting of eight systems of two staves each (treble and bass clef). The music is written in a key signature of one flat (Bb) and a common time signature (C). The notation includes various rhythmic values, accidentals, and fingerings.

**System 1:** Treble clef has a melodic line with notes G4, A4, Bb4, C5, D5, E5, F5, G5. Bass clef has a bass line with notes G2, Bb2, D3, F3, G3, Bb3, D4, F4. Fingerings: 4 3 2, 1, 3 2 1, 3 2 3 4 5.

**System 2:** Treble clef has a melodic line with notes G4, A4, Bb4, C5, D5, E5, F5, G5. Bass clef has a bass line with notes G2, Bb2, D3, F3, G3, Bb3, D4, F4. Fingerings: 1 2 1, 3, 1, 3, 3 2.

**System 3:** Treble clef has a melodic line with notes G4, A4, Bb4, C5, D5, E5, F5, G5. Bass clef has a bass line with notes G2, Bb2, D3, F3, G3, Bb3, D4, F4. Fingerings: 2, 1, 3, 1, 3, 3.

**System 4:** Treble clef has a melodic line with notes G4, A4, Bb4, C5, D5, E5, F5, G5. Bass clef has a bass line with notes G2, Bb2, D3, F3, G3, Bb3, D4, F4. Fingerings: 1, 2, 4, 2, 3, 5, 2, 1.

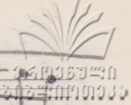
**System 5:** Treble clef has a melodic line with notes G4, A4, Bb4, C5, D5, E5, F5, G5. Bass clef has a bass line with notes G2, Bb2, D3, F3, G3, Bb3, D4, F4. Fingerings: 1, 2, 4, 1, 3, 5, 3.

**System 6:** Treble clef has a melodic line with notes G4, A4, Bb4, C5, D5, E5, F5, G5. Bass clef has a bass line with notes G2, Bb2, D3, F3, G3, Bb3, D4, F4. Fingerings: 1, 3, 2, 4, 1, 4, 1, 4, 5, 4, 3.





Handwritten musical score for piano, consisting of seven systems of two staves each (treble and bass clef). The music is written in a key signature of one flat (B-flat) and a common time signature (C). The score includes various musical notations such as notes, rests, slurs, and dynamic markings like *ff*. Fingerings are indicated by numbers 1-5 above or below notes. The piece concludes with a double bar line and repeat dots.



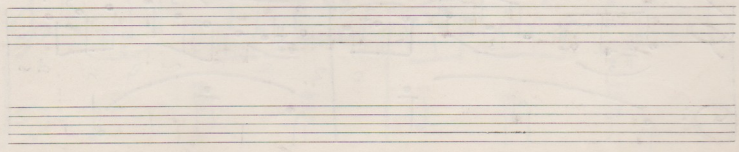
Handwritten musical notation for the first system, consisting of a grand staff with treble and bass clefs. The treble staff contains a melodic line with slurs and fingerings (1, 3, 2, 4, 3). The bass staff contains a supporting line with slurs and fingerings (1, 4).

Handwritten musical notation for the second system, continuing the grand staff. The treble staff has slurs and fingerings (2, 4). The bass staff has slurs and fingerings (1, 2, 3).

Handwritten musical notation for the third system. The treble staff features slurs and fingerings (3, 2, 4, 1, 2, 3, 1). The bass staff has slurs and fingerings (1, 2, 3).

Handwritten musical notation for the fourth system. The treble staff has slurs and fingerings (2, 4, 3, 5, 1, 3). The bass staff has slurs and fingerings (1, 4).

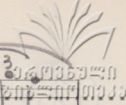
Handwritten musical notation for the fifth system. The treble staff has slurs and fingerings (1, 3, 2, 4). The bass staff has slurs and fingerings (1, 4). The system concludes with a double bar line and repeat dots.





Presto

28070026



Handwritten musical notation for the first system. The treble clef staff contains a sequence of chords and triplets, with a dynamic marking of *mf*. The bass clef staff contains a simple bass line. A watermark is visible in the upper right corner of the page.

Handwritten musical notation for the second system, continuing the piece with similar chordal and triplet patterns in both staves.

Handwritten musical notation for the third system, featuring more complex rhythmic patterns and triplets.

Handwritten musical notation for the fourth system, showing further development of the musical themes.

Handwritten musical notation for the fifth system, with intricate chordal structures and triplet figures.

Handwritten musical notation for the sixth system, concluding the piece with a final cadence. The bass clef staff includes the letters 'c', 'e', 'c', 'e', 'n', 'd' written below the notes.

34095940  
2012年11月09日

Handwritten musical notation for the first system. The treble clef staff contains a sequence of notes with fingerings: 3, 2, b, 3, 3, b, 3, 5, 3, 1. The bass clef staff contains a few notes and rests.

Handwritten musical notation for the second system. The treble clef staff has notes with fingerings: 2, 3, 2, 3, 1, 3, 2, 3, 3, 5, 3. The bass clef staff has notes with a sharp sign and the word "diminu" written below.

Handwritten musical notation for the third system. The treble clef staff has notes with fingerings: 2, 3, 4, 3, 2, 1, 3, 5. The bass clef staff has notes with a sharp sign and some handwritten markings.

Handwritten musical notation for the fourth system. The treble clef staff has notes with fingerings: 3, 3, 3, 3, 3. The bass clef staff has notes with a sharp sign and some handwritten markings.

Handwritten musical notation for the fifth system. The treble clef staff has notes with fingerings: 3, 3, 3, 3, 3. The bass clef staff has notes with a sharp sign and some handwritten markings.

Handwritten musical notation for the sixth system. The treble clef staff has notes with fingerings: 3, 3, 3, 2, 3. The bass clef staff has notes with a sharp sign and some handwritten markings.



Handwritten musical notation for the first system. The treble staff contains a sequence of notes with triplets (3) and some accidentals (sharps and naturals). The bass staff contains chords and single notes.

Handwritten musical notation for the second system. The treble staff includes notes with triplets (3) and some notes with a '4' above them. The bass staff contains chords with flats and naturals.

Handwritten musical notation for the third system. The treble staff has notes with triplets (3) and some notes with '2' or '4' above them. The bass staff contains chords. A dynamic marking of *ff* is present in the bass staff.

Handwritten musical notation for the fourth system. The treble staff features notes with triplets (3) and some notes with '2' or '3' above them. The bass staff contains chords and single notes.

Handwritten musical notation for the fifth system. The treble staff has notes with triplets (3) and some notes with '2' or '3' above them. The bass staff contains chords and single notes.

Handwritten musical notation for the sixth system. The treble staff has notes with triplets (3) and some notes with '2' or '3' above them. The bass staff contains chords and single notes. A dynamic marking of *f* and a tempo change marking of *a tempo* are present.







Handwritten musical notation, first system. Treble clef, key signature of one sharp (F#). The right hand features a sequence of chords and triplets, with fingerings 5, 3, 2, 1, 2, 3, 1, 2, 3. The left hand provides a bass line with a few notes and a long slur.

Handwritten musical notation, second system. Treble clef, key signature of one sharp. The right hand continues with triplets and chords, fingerings 3, 4, 3, 3, 3, 3. The left hand has a long slur across two measures.

Handwritten musical notation, third system. Treble clef, key signature of one sharp. The right hand features triplets and chords, fingerings 3, 3, 3, #2, 3, 4, 3, 1, 3. The left hand has a long slur across two measures.

Handwritten musical notation, fourth system. Treble clef, key signature of one sharp. The right hand features triplets and chords, fingerings 2, 3, 4, 3, 1, 2, 3, 4, 3, 1, 3, 2. The left hand has a long slur across two measures.

Handwritten musical notation, fifth system. Treble clef, key signature of one sharp. The right hand features triplets and chords, fingerings 3, 4, 3, 5, 3, 2, 1, 3, 2, 3, 4, 3. The left hand has a long slur across two measures.

Handwritten musical notation, sixth system. Treble clef, key signature of one sharp. The right hand features triplets and chords, fingerings 1, 3, 5, 3, #. The left hand has a long slur across two measures.

ABA



Handwritten musical score for piano, consisting of seven systems of two staves each. The music is written in treble and bass clefs with a key signature of one sharp (F#) and a 7/8 time signature. The notation includes various rhythmic values, slurs, and dynamic markings such as accents (>) and a forte (f) marking. The score is organized into systems, with the first system containing the most complex rhythmic patterns and the final system showing a more sparse, melodic texture.







中華民國三十四年  
五月二十一日

Handwritten musical notation, first system. It consists of two staves: a treble clef staff on top and a bass clef staff on the bottom. The key signature has one sharp (F#). The music features a melody in the treble staff with eighth and sixteenth notes, and a bass line in the bass staff with eighth notes. There are some corrections and erasures in the first few measures.

Handwritten musical notation, second system. It consists of two staves: a treble clef staff on top and a bass clef staff on the bottom. The key signature has one sharp (F#). The music continues with a melody in the treble staff and a bass line in the bass staff. There are some corrections and erasures in the first few measures.

Handwritten musical notation, third system. It consists of two staves: a treble clef staff on top and a bass clef staff on the bottom. The key signature has one sharp (F#). The music continues with a melody in the treble staff and a bass line in the bass staff. There are some corrections and erasures in the first few measures.

Handwritten musical notation, fourth system. It consists of two staves: a treble clef staff on top and a bass clef staff on the bottom. The key signature has one sharp (F#). The music continues with a melody in the treble staff and a bass line in the bass staff. There are some corrections and erasures in the first few measures.

Handwritten musical notation, fifth system. It consists of two staves: a treble clef staff on top and a bass clef staff on the bottom. The key signature has one sharp (F#). The music continues with a melody in the treble staff and a bass line in the bass staff. There are some corrections and erasures in the first few measures.

Handwritten musical notation, sixth system. It consists of two staves: a treble clef staff on top and a bass clef staff on the bottom. The key signature has one sharp (F#). The music continues with a melody in the treble staff and a bass line in the bass staff. There are some corrections and erasures in the first few measures.



04405940  
0627110033

Handwritten musical notation, first system. The system consists of two staves. The upper staff is in treble clef with a key signature of one sharp (F#) and a common time signature (C). It contains a melodic line with eighth and sixteenth notes, some beamed together. The lower staff is in bass clef with the same key signature and time signature, containing a bass line with chords and single notes.

Handwritten musical notation, second system. Similar to the first system, it features two staves. The upper staff continues the melodic line with various rhythmic patterns. The lower staff provides harmonic support with chords and moving bass lines.

Handwritten musical notation, third system. The upper staff shows more complex rhythmic figures, including some triplets and sixteenth-note runs. The lower staff continues with a steady bass line.

Handwritten musical notation, fourth system. The upper staff begins with a triplet of eighth notes marked with an '8' above it. The lower staff has some rests and chords.

Handwritten musical notation, fifth system. The upper staff continues with a melodic line. The lower staff features a series of chords, some with a '4' above them, indicating a four-measure rest or a specific chord duration.

Handwritten musical notation, sixth system. The upper staff has a melodic line. The lower staff includes a triplet of eighth notes marked with a '3' above it, and ends with a final cadence.

Handwritten text and a logo in the top right corner. The logo features a stylized plant or sunburst design above the text "Handwritten Music".

Handwritten musical notation, first system. It consists of two staves: a treble clef staff on top and a bass clef staff on the bottom. The music is written in a common time signature (C). The melody in the treble staff begins with a quarter note G4, followed by quarter notes A4, B4, and C5. The bass staff provides a harmonic accompaniment with quarter notes G2, B1, and D2.

Handwritten musical notation, second system. It consists of two staves: a treble clef staff on top and a bass clef staff on the bottom. The melody in the treble staff continues with quarter notes D5, E5, and F5. The bass staff continues with quarter notes E2, G2, and A2.

Handwritten musical notation, third system. It consists of two staves: a treble clef staff on top and a bass clef staff on the bottom. The melody in the treble staff includes quarter notes G5, A5, and B5. The bass staff continues with quarter notes B2, C3, and D3.

Handwritten musical notation, fourth system. It consists of two staves: a treble clef staff on top and a bass clef staff on the bottom. The melody in the treble staff includes quarter notes C6, B5, and A5. The bass staff continues with quarter notes E3, F3, and G3.

Handwritten musical notation, fifth system. It consists of two staves: a treble clef staff on top and a bass clef staff on the bottom. The melody in the treble staff includes quarter notes G5, F5, and E5. The bass staff continues with quarter notes A3, B3, and C4.

Handwritten musical notation, sixth system. It consists of two staves: a treble clef staff on top and a bass clef staff on the bottom. The melody in the treble staff includes quarter notes D5, C5, and B4. The bass staff continues with quarter notes D4, E4, and F4.



The first system of handwritten musical notation consists of two staves. The upper staff is in treble clef and contains a sequence of notes, including a half note G4, a quarter note A4, a quarter note B4, a quarter note C5, a quarter note D5, a quarter note E5, a quarter note F5, and a quarter note G5. The lower staff is in bass clef and contains a sequence of notes, including a half note C3, a quarter note D3, a quarter note E3, a quarter note F3, a quarter note G3, a quarter note A3, a quarter note B3, and a quarter note C4. There are several accidentals (sharps) throughout the system.

The second system of handwritten musical notation consists of two staves. The upper staff is in treble clef and contains a sequence of notes, including a half note G4, a quarter note A4, a quarter note B4, a quarter note C5, a quarter note D5, a quarter note E5, a quarter note F5, and a quarter note G5. The lower staff is in bass clef and contains a sequence of notes, including a half note C3, a quarter note D3, a quarter note E3, a quarter note F3, a quarter note G3, a quarter note A3, a quarter note B3, and a quarter note C4. There are several accidentals (sharps) throughout the system.

The third system of handwritten musical notation consists of two staves. The upper staff is in treble clef and contains a sequence of notes, including a half note G4, a quarter note A4, a quarter note B4, a quarter note C5, a quarter note D5, a quarter note E5, a quarter note F5, and a quarter note G5. The lower staff is in bass clef and contains a sequence of notes, including a half note C3, a quarter note D3, a quarter note E3, a quarter note F3, a quarter note G3, a quarter note A3, a quarter note B3, and a quarter note C4. There are several accidentals (sharps) throughout the system.

The fourth system of handwritten musical notation consists of two staves. The upper staff is in treble clef and contains a sequence of notes, including a half note G4, a quarter note A4, a quarter note B4, a quarter note C5, a quarter note D5, a quarter note E5, a quarter note F5, and a quarter note G5. The lower staff is in bass clef and contains a sequence of notes, including a half note C3, a quarter note D3, a quarter note E3, a quarter note F3, a quarter note G3, a quarter note A3, a quarter note B3, and a quarter note C4. There are several accidentals (sharps) throughout the system.

The fifth system of handwritten musical notation consists of two staves. The upper staff is in treble clef and contains a sequence of notes, including a half note G4, a quarter note A4, a quarter note B4, a quarter note C5, a quarter note D5, a quarter note E5, a quarter note F5, and a quarter note G5. The lower staff is in bass clef and contains a sequence of notes, including a half note C3, a quarter note D3, a quarter note E3, a quarter note F3, a quarter note G3, a quarter note A3, a quarter note B3, and a quarter note C4. There are several accidentals (sharps) throughout the system.

The sixth system of handwritten musical notation consists of two staves. The upper staff is in treble clef and contains a sequence of notes, including a half note G4, a quarter note A4, a quarter note B4, a quarter note C5, a quarter note D5, a quarter note E5, a quarter note F5, and a quarter note G5. The lower staff is in bass clef and contains a sequence of notes, including a half note C3, a quarter note D3, a quarter note E3, a quarter note F3, a quarter note G3, a quarter note A3, a quarter note B3, and a quarter note C4. There are several accidentals (sharps) throughout the system.



Handwritten musical notation, first system. It consists of two staves joined by a brace on the left. The top staff is in treble clef and the bottom in bass clef. The key signature has one sharp (F#). The music features a melodic line in the upper voice and a more rhythmic accompaniment in the lower voice.

Handwritten musical notation, second system. Similar to the first system, it has two staves with treble and bass clefs. The notation continues with various note values and rests, maintaining the one-sharp key signature.

Handwritten musical notation, third system. This system includes a double bar line. The key signature changes to two sharps (F# and C#) after the bar line. The musical texture remains consistent with the previous systems.

Handwritten musical notation, fourth system. It continues the piece with two staves. The notation shows a continuation of the melodic and harmonic ideas established in the earlier systems.

Handwritten musical notation, fifth system. The word "riten" (ritardando) is written in the middle of the system. The system concludes with a double bar line and a repeat sign. The key signature remains two sharps.

Handwritten musical notation, sixth system. The final system on the page, featuring two staves. The music concludes with a final cadence in the two-sharp key signature.



Handwritten musical notation, first system. It consists of two staves (treble and bass clef) with a key signature of one sharp (F#) and a common time signature (C). The music features a melody in the treble clef and a bass line in the bass clef. There are some markings that look like "0000" in the bass line.

Handwritten musical notation, second system. Similar to the first system, it has two staves with a key signature of one sharp and common time. The notation includes various note values and rests.

Handwritten musical notation, third system. Two staves with a key signature of one sharp and common time. The bass line shows some rhythmic patterns with vertical lines.

Handwritten musical notation, fourth system. Two staves with a key signature of one sharp and common time. The treble clef staff has some wavy lines above it, possibly indicating vibrato or a specific performance instruction.

Handwritten musical notation, fifth system. Two staves with a key signature of one sharp and common time. The bass line has some markings that look like "0000" and "0000".

Handwritten musical notation, sixth system. Two staves with a key signature of one sharp and common time. The notation continues with various note values and rests.

3) I

Handwritten musical notation for the first system, featuring a treble and bass clef with a key signature of one sharp (F#). The treble staff contains a melodic line with a long slur over the first two measures. The bass staff contains a rhythmic accompaniment with eighth notes and chords. A circled '3' is written below the first measure of the bass staff.

Handwritten musical notation for the second system, continuing the piece. The treble staff has a melodic line with slurs and ties. The bass staff has a steady accompaniment of chords and eighth notes.

Handwritten musical notation for the third system, showing further development of the melody and accompaniment.

Handwritten musical notation for the fourth system, with continued melodic and harmonic progression.

Handwritten musical notation for the fifth system, maintaining the established musical style.

Handwritten musical notation for the sixth system, concluding the piece with a final melodic phrase and accompaniment.



Handwritten musical notation for the first system. The treble clef staff contains a whole note G4 and a whole note F4. The bass clef staff contains a whole note chord of G2, B2, and D3, followed by a whole note chord of G2, B2, and D3. A handwritten 'C' is written below the bass clef staff.

~  
||

Handwritten musical notation for the second system. The treble clef staff has a 4/4 time signature and contains a melodic line of eighth notes: G4, A4, B4, C5, B4, A4, G4. The bass clef staff contains a bass line of quarter notes: G2, B2, D3, G2, B2, D3, G2, B2, D3.

Handwritten musical notation for the third system. The treble clef staff continues the melodic line with eighth notes: A4, B4, C5, B4, A4, G4, F4, E4. The bass clef staff continues the bass line with quarter notes: G2, B2, D3, G2, B2, D3, G2, B2, D3.

Handwritten musical notation for the fourth system. The treble clef staff continues the melodic line with eighth notes: D4, E4, F4, G4, A4, B4, C5, B4, A4, G4. The bass clef staff continues the bass line with quarter notes: G2, B2, D3, G2, B2, D3, G2, B2, D3.

Handwritten musical notation for the fifth system. The treble clef staff continues the melodic line with eighth notes: F4, E4, D4, C4, B3, A3, G3, F3, E3, D3. A slur is placed over the last three notes (G3, F3, E3). The bass clef staff continues the bass line with quarter notes: G2, B2, D3, G2, B2, D3, G2, B2, D3.

Handwritten musical notation for the sixth system. The treble clef staff continues the melodic line with eighth notes: D3, C3, B2, A2, G2, F2, E2, D2. The bass clef staff continues the bass line with quarter notes: G2, B2, D3, G2, B2, D3, G2, B2, D3.

III

The first system of handwritten musical notation consists of two staves. The upper staff is in treble clef and contains a sequence of notes: a quarter note G4, a quarter note A4, a quarter note B4, and a half note C5. The lower staff is in bass clef and contains a sequence of notes: a quarter note G2, a quarter note A2, a quarter note B2, and a half note C3.

The second system of handwritten musical notation consists of two staves. The upper staff is in treble clef and contains a sequence of notes: a quarter note G4, a quarter note A4, a quarter note B4, a quarter note C5, a quarter note B4, a quarter note A4, a quarter note G4, and a half note F4. The lower staff is in bass clef and contains a sequence of notes: a quarter note G2, a quarter note A2, a quarter note B2, a quarter note C3, a quarter note B2, a quarter note A2, a quarter note G2, and a half note F2.

The third system of handwritten musical notation consists of two staves. The upper staff is in treble clef and contains a sequence of notes: a quarter note G4, a quarter note A4, a quarter note B4, a quarter note C5, a quarter note B4, a quarter note A4, a quarter note G4, and a half note F4. The lower staff is in bass clef and contains a sequence of notes: a quarter note G2, a quarter note A2, a quarter note B2, a quarter note C3, a quarter note B2, a quarter note A2, a quarter note G2, and a half note F2.

The fourth system of handwritten musical notation consists of two staves. The upper staff is in treble clef and contains a sequence of notes: a quarter note G4, a quarter note A4, a quarter note B4, a quarter note C5, a quarter note B4, a quarter note A4, a quarter note G4, and a half note F4. The lower staff is in bass clef and contains a sequence of notes: a quarter note G2, a quarter note A2, a quarter note B2, a quarter note C3, a quarter note B2, a quarter note A2, a quarter note G2, and a half note F2.

The fifth system of handwritten musical notation consists of two staves. The upper staff is in treble clef and contains a sequence of notes: a quarter note G4, a quarter note A4, a quarter note B4, a quarter note C5, a quarter note B4, a quarter note A4, a quarter note G4, and a half note F4. The lower staff is in bass clef and contains a sequence of notes: a quarter note G2, a quarter note A2, a quarter note B2, a quarter note C3, a quarter note B2, a quarter note A2, a quarter note G2, and a half note F2.

The sixth system of handwritten musical notation consists of two staves. The upper staff is in treble clef and contains a sequence of notes: a quarter note G4, a quarter note A4, a quarter note B4, a quarter note C5, a quarter note B4, a quarter note A4, a quarter note G4, and a half note F4. The lower staff is in bass clef and contains a sequence of notes: a quarter note G2, a quarter note A2, a quarter note B2, a quarter note C3, a quarter note B2, a quarter note A2, a quarter note G2, and a half note F2.



Handwritten number: 04195940  
Handwritten number: 0421110933

Handwritten musical notation for the first system, consisting of two staves (treble and bass clef) with notes and rests.

Handwritten musical notation for the second system, consisting of two staves (treble and bass clef) with notes and rests.

Handwritten musical notation for the third system, consisting of two staves (treble and bass clef) with notes and rests.

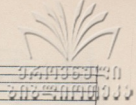
Handwritten musical notation for the fourth system, consisting of two staves (treble and bass clef) with notes and rests.

26 | I - 618. IV

canto

piano

Handwritten musical notation for the fifth system, including a vocal line (canto) and piano accompaniment (piano) with figured bass notation.



Handwritten musical score, first system. It consists of three staves: a single treble clef staff at the top, and a grand staff (treble and bass clefs) below. The music is in G major (one sharp). The top staff contains a melodic line with eighth notes and a slur. The grand staff contains a piano accompaniment with sixteenth-note chords in the right hand and single notes in the left hand. The number '6' is written below the first two chords in the right hand.

Handwritten musical score, second system. It follows the same three-staff layout as the first system. The melodic line continues with eighth notes and slurs. The piano accompaniment continues with sixteenth-note chords in the right hand and single notes in the left hand. The number '6' is written below the first two chords in the right hand.

Handwritten musical score, third system. It follows the same three-staff layout. The melodic line continues with eighth notes and slurs. The piano accompaniment continues with sixteenth-note chords in the right hand and single notes in the left hand. The number '6' is written below the first two chords in the right hand.

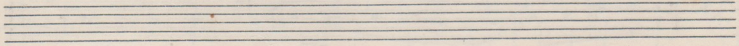
Handwritten musical score, fourth system. It follows the same three-staff layout. The melodic line continues with eighth notes and slurs. The piano accompaniment continues with sixteenth-note chords in the right hand and single notes in the left hand. The number '6' is written below the first two chords in the right hand.



Handwritten musical notation for the first system, consisting of three staves. The top staff is a single treble clef with a key signature of one sharp (F#). The middle and bottom staves are grouped by a brace and have a common key signature of one sharp. The middle staff contains complex rhythmic patterns with sixteenth and thirty-second notes, and is marked with a '6' under several groups. The bottom staff contains a simple bass line with quarter and eighth notes.

Handwritten musical notation for the second system, consisting of three staves. The top staff is a single treble clef with a key signature of one sharp. The middle and bottom staves are grouped by a brace and have a common key signature of one sharp. The middle staff contains complex rhythmic patterns with sixteenth and thirty-second notes, and is marked with a '6' under several groups. The bottom staff contains a simple bass line with quarter and eighth notes.

Handwritten musical notation for the third system, consisting of three staves. The top staff is a single treble clef with a key signature of one sharp. The middle and bottom staves are grouped by a brace and have a common key signature of one sharp. The middle staff contains complex rhythmic patterns with sixteenth and thirty-second notes, and is marked with a '6' under several groups. The bottom staff contains a simple bass line with quarter and eighth notes.



Handwritten musical notation for the fourth system, consisting of two staves. The top staff is a treble clef with a key signature of one sharp and a 2/4 time signature. The bottom staff is a bass clef with a key signature of one sharp and a 2/4 time signature. Both staves contain rhythmic patterns with eighth and sixteenth notes.

94965940  
572710000

Handwritten musical notation for the first system, consisting of a grand staff with treble and bass clefs. The music features eighth and sixteenth notes in the right hand and chords in the left hand.

Handwritten musical notation for the second system, including a double bar line and the word "Fine" written above the staff.

Handwritten musical notation for the third system, continuing the piece with similar rhythmic patterns.

Handwritten musical notation for the fourth system, ending with a double bar line.

Handwritten musical notation for the fifth system, starting with a treble clef and a 2/4 time signature, and including the text "ABA" above the staff. The notation shows a sequence of chords and notes in both hands.



1940  
5740  
1940

Handwritten musical notation for the first system. The treble staff contains a melodic line with eighth and sixteenth notes, while the bass staff provides a harmonic accompaniment with chords and moving lines. The key signature is one sharp (F#) and the time signature is common time.

Handwritten musical notation for the second system. The melodic line in the treble staff continues with eighth notes and rests, while the bass staff maintains a steady accompaniment. The notation is consistent with the first system.

Handwritten musical notation for the third system. The treble staff shows a continuation of the melodic motif, and the bass staff features more complex chordal textures. The overall style is that of a handwritten piano score.

Handwritten musical notation for the fourth system. A triplet of eighth notes is clearly marked in the treble staff. The bass staff continues with its accompaniment, showing some rhythmic variation.

Handwritten musical notation for the fifth system. This system is characterized by multiple triplet markings in both the treble and bass staves, indicating a more technically demanding section of the piece.

Handwritten musical notation for the sixth system. The piece concludes with several triplet markings in the bass staff, mirroring the complexity of the previous system. The notation is clear and legible throughout.



Handwritten musical notation, first system. Treble clef, key signature of one sharp (F#), 4/4 time signature. The right hand features chords and triplets, while the left hand has a bass line with triplets. A large slur covers the first two measures of the right hand.

Handwritten musical notation, second system. Continuation of the first system, showing similar chordal and triplet patterns in both hands.

Handwritten musical notation, third system. The right hand has a melodic line with triplets, and the left hand has a bass line with triplets. There are some scribbles and corrections in the left hand.

Handwritten musical notation, fourth system. The right hand has a melodic line with eighth notes and quarter notes. The left hand has a bass line with chords and eighth notes.

Handwritten musical notation, fifth system. The right hand has a melodic line with eighth notes and quarter notes. The left hand has a bass line with chords and eighth notes.

Handwritten musical notation, sixth system. The right hand has a melodic line with eighth notes and quarter notes. The left hand has a bass line with chords and eighth notes.



1957-40  
CANTON

Handwritten musical notation for the first system. The treble staff contains a series of chords, many of which are grouped with a slur and a '3' indicating a triplet. The bass staff features a steady accompaniment of chords, also including triplets. The key signature is one sharp (F#).

Handwritten musical notation for the second system. The treble staff continues with chordal patterns and triplets. The bass staff maintains a consistent accompaniment. The key signature remains one sharp (F#).

Handwritten musical notation for the third system. The treble staff has fewer notes, focusing on chordal structures. The bass staff shows a more active line with eighth notes and triplets. The key signature is one sharp (F#).

Handwritten musical notation for the fourth system. The treble staff has a more melodic line with eighth and sixteenth notes. The bass staff continues with a steady accompaniment. The key signature is one sharp (F#).

Handwritten musical notation for the fifth system. The treble staff features a clear melodic line with a slur over several notes. The bass staff provides accompaniment. The key signature is one sharp (F#).

Handwritten musical notation for the sixth system. The treble staff has a melodic line that concludes the piece. The bass staff provides accompaniment. The key signature is one sharp (F#).

Handwritten musical notation for the first system. The treble clef staff contains a series of notes, including a half note G4, a quarter note A4, and a quarter note B4. The bass clef staff contains a series of chords and notes, including a half note G3, a quarter note A3, and a quarter note B3. There are some handwritten annotations in the left margin.

II ABA ✓

Handwritten musical notation for the second system. The treble clef staff shows a complex rhythmic pattern with many beamed notes. The bass clef staff contains a series of chords and notes, including a half note G3, a quarter note A3, and a quarter note B3. There are some handwritten annotations in the left margin.

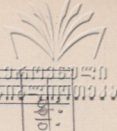
Handwritten musical notation for the third system. The treble clef staff contains a series of notes, including a half note G4, a quarter note A4, and a quarter note B4. The bass clef staff contains a series of chords and notes, including a half note G3, a quarter note A3, and a quarter note B3. There are some handwritten annotations in the left margin.

Handwritten musical notation for the fourth system. The treble clef staff shows a complex rhythmic pattern with many beamed notes. The bass clef staff contains a series of chords and notes, including a half note G3, a quarter note A3, and a quarter note B3. There are some handwritten annotations in the left margin.

Handwritten musical notation for the fifth system. The treble clef staff contains a series of notes, including a half note G4, a quarter note A4, and a quarter note B4. The bass clef staff contains a series of chords and notes, including a half note G3, a quarter note A3, and a quarter note B3. There are some handwritten annotations in the left margin.

Handwritten musical notation for the sixth system, consisting of empty staves.





Handwritten musical score, first system. Treble clef, bass clef, key signature of two flats (B-flat, E-flat). The treble staff contains a melodic line with quarter and eighth notes. The bass staff contains a dense accompaniment of chords and eighth notes.

Handwritten musical score, second system. Treble clef, bass clef, key signature of two flats. The treble staff features a series of chords. The bass staff has a melodic line with quarter notes.

Handwritten musical score, third system. Treble clef, bass clef, key signature of two flats. The treble staff has a melodic line with quarter notes and rests. The bass staff has a melodic line with quarter notes.

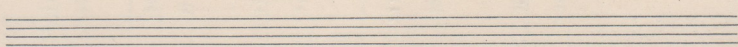
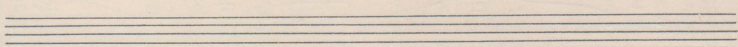
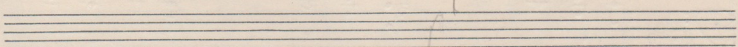
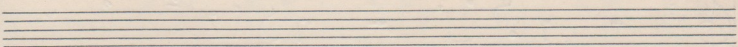
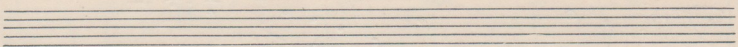
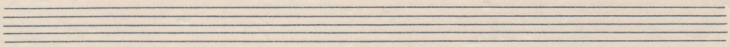
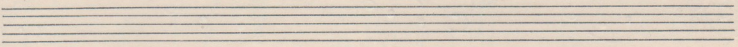
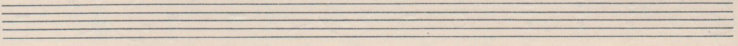
Handwritten musical score, fourth system. Treble clef, bass clef, key signature of two flats. The treble staff has a melodic line with quarter notes and rests. The bass staff has a melodic line with quarter notes. A fermata is present over the final note of the treble staff.

Handwritten musical score, fifth system. Treble clef, bass clef, key signature of two flats. The treble staff has a melodic line with quarter notes and rests. The bass staff has a melodic line with quarter notes. A fermata is present over the final note of the treble staff.

Handwritten musical score, sixth system. Treble clef, bass clef, key signature of two flats. The treble staff has a melodic line with quarter notes and rests. The bass staff has a melodic line with quarter notes. A fermata is present over the final note of the treble staff. The system is marked with 'm.s.' (musica scripta) above the treble staff and 'm.s.' above the bass staff.



Handwritten musical score for piano, consisting of two systems of staves. The first system has two staves (treble and bass clef) and the second system also has two staves. The music is in a minor key and includes various notes, rests, and dynamic markings like "m.s.".







Handwritten text and a logo in the top right corner, possibly a date or page number.

Handwritten musical notation, first system. Treble clef, key signature of two sharps (F# and C#). The melody consists of eighth and quarter notes. The bass line features chords and rests.

Handwritten musical notation, second system. Treble clef, key signature of two sharps. The melody continues with eighth and quarter notes. The bass line has chords and rests.

Handwritten musical notation, third system. Treble clef, key signature of two sharps. The melody continues with eighth and quarter notes. The bass line has chords and rests.

Handwritten musical notation, fourth system. Treble clef, key signature of two sharps. The melody continues with eighth and quarter notes. The bass line has chords and rests.

Handwritten musical notation, fifth system. Treble clef, key signature of two sharps. The melody continues with eighth and quarter notes. The bass line has chords and rests.

Handwritten musical notation, sixth system. Treble clef, key signature of two sharps. The melody continues with eighth and quarter notes. The bass line has chords and rests.



941935440  
2017-11-10 09:33

Handwritten musical notation for the first system. The treble staff contains a melodic line with eighth and sixteenth notes, including a triplet. The bass staff provides accompaniment with chords and single notes. Dynamic markings include *s8* and *m.d.* (mezzo-dolce).

Handwritten musical notation for the second system. The treble staff continues the melodic line with eighth notes. The bass staff features chords and rests. A dynamic marking of *m8* is present.

Handwritten musical notation for the third system. The treble staff has a melodic line with eighth notes. The bass staff has chords and rests. A dynamic marking of *s8* is present.

Handwritten musical notation for the fourth system. The treble staff continues the melodic line. The bass staff has chords and rests. A dynamic marking of *s8* is present.

Handwritten musical notation for the fifth system. The treble staff has a melodic line with eighth notes. The bass staff has chords and rests. A dynamic marking of *s8* is present.

Handwritten musical notation for the sixth system. The treble staff continues the melodic line. The bass staff has chords and rests.

Handwritten musical score, first system. Treble and bass clefs, key signature of two sharps (F# and C#). The bass line includes dynamic markings *mf* and *mf*, and articulation marks *8* and *1*.

Handwritten musical score, second system. Treble and bass clefs, key signature of two sharps. The bass line includes dynamic markings *mf* and *mf*, and articulation marks *8* and *1*.

Handwritten musical score, third system. Treble and bass clefs, key signature of two sharps. The bass line includes dynamic markings *mf* and *mf*, and articulation marks *8* and *1*.

Handwritten musical score, fourth system. Treble and bass clefs, key signature of two sharps. The bass line includes dynamic markings *mf* and *mf*, and articulation marks *8* and *1*.

Handwritten musical score, fifth system. Treble and bass clefs, key signature of two sharps. The bass line includes dynamic markings *mf* and *mf*, and articulation marks *8* and *1*.

Handwritten musical score, sixth system. Treble and bass clefs, key signature of two sharps. The bass line includes dynamic markings *mf* and *mf*, and articulation marks *8* and *1*.





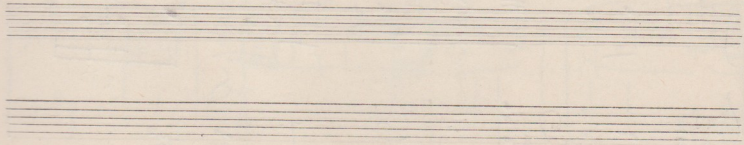
Handwritten musical score, first system. Treble clef, key signature of two sharps (F# and C#), and a common time signature (C). The music features a complex texture with many beamed notes and rests. A dynamic marking of *p* (piano) is present. The word "zit" is written below the staff. A stamp in the top right corner reads "國立音樂圖書館" (National Library of Music of the Republic of China).

Handwritten musical score, second system. Treble clef, key signature of two sharps, and common time. The music continues with complex rhythmic patterns and beamed notes. A dynamic marking of *p* is visible.

Handwritten musical score, third system. Treble clef, key signature of two sharps, and common time. The music continues with complex rhythmic patterns and beamed notes. A dynamic marking of *p* is visible.

Handwritten musical score, fourth system. Treble clef, key signature of two sharps, and common time. The music continues with complex rhythmic patterns and beamed notes. A dynamic marking of *p* is visible. The word "zit" is written below the staff.

Handwritten musical score, fifth system. Treble clef, key signature of two sharps, and common time. The music concludes with a final chord and a dynamic marking of *pp* (pianissimo). A double bar line is present at the end of the system.





Մոսկվա, ՐոժժեճՎենսկի ԲուլՎար, Լ. 22  
Արտ. 688. Ընա 1 ր. 10 Կ. Զակ. 608

Ե1161Դ Ը. Ը // Կ